

Name _____
Date _____

Unit Circle Trig Assignment #3

Draw the following angles then:

1. Name a point that is on a terminal side
2. Name another angle that is co-terminal with the given angle.

1) 135°

2) 45°

3) 225°

4) 315°

5) 90°

6) 360°

7) -90°

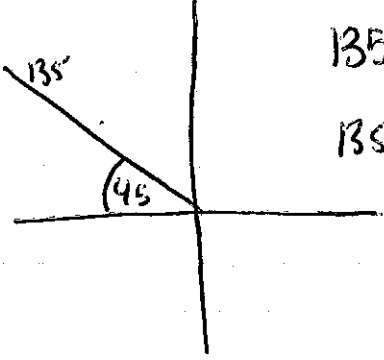
8) Draw an angle of 30° in standard position. Then find a if the point $(a, 1)$ is on the terminal side of 30°

9) Draw a 60° angle in standard position. Then find b if the point $(2, b)$ is on the terminal side of 60°

10) Draw an angle in standard position whose terminal side contains the point $(3, -2)$. Find the distance from the origin to the point.

Chapter 10 Assignment #3

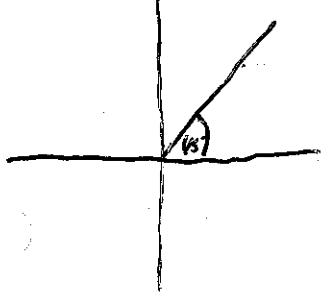
① 135°



$135 + 360 = 495^\circ$ co-terminal
 $135 - 360 = -225^\circ$ same spot as 135°

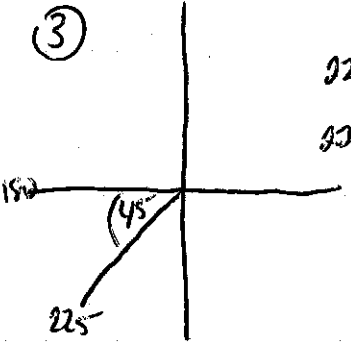
$(-6, 6)$

② 45°



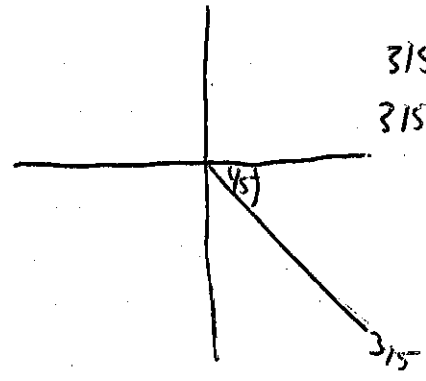
$45 + 360 = 405^\circ$ co-terminal
 $45 - 360 = -315^\circ$

③



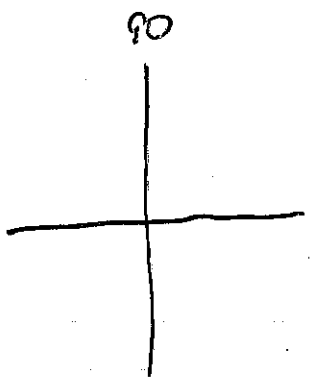
$225 + 360 = 585^\circ$
 $225 - 360 = -135^\circ$

④ 315°

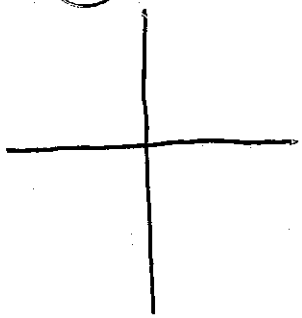


$315 + 360 = 675^\circ$
 $315 - 360 = -45^\circ$

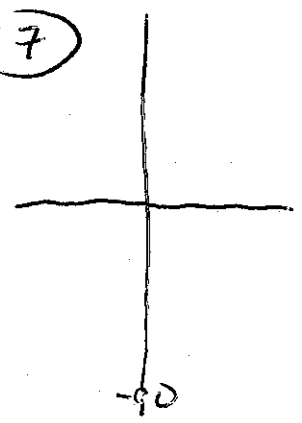
⑤



⑥

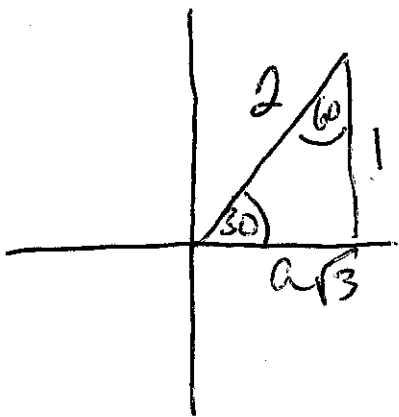


⑦



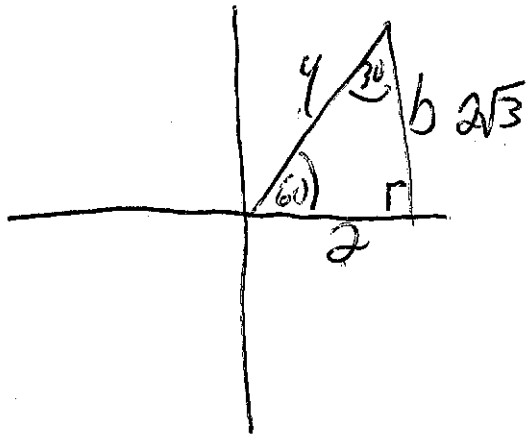
Chapter 10 Assignment #3

#8



$a = \sqrt{3}$

#9



$b = 2\sqrt{3}$