

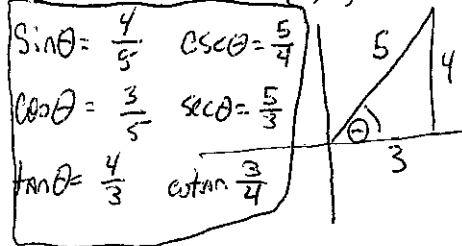
Name _____

Date _____

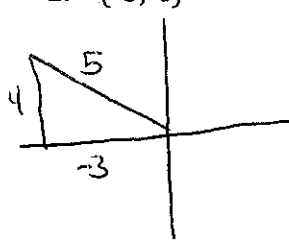
Unit Circle Trig Assignment #4

Sketch a picture of the angle if the point given is on the terminal side of the angle. Find all six trigonometric functions of θ .

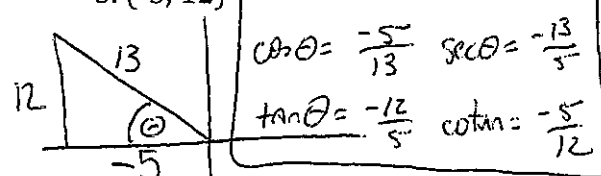
1. (3, 4)



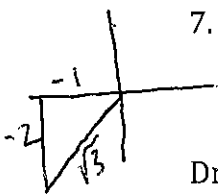
2. (-3, 4)



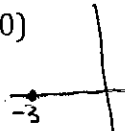
3. (-5, 12)



7. (-1, -2)



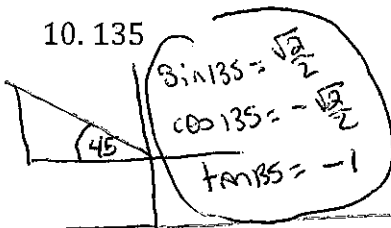
9. (-3, 0)



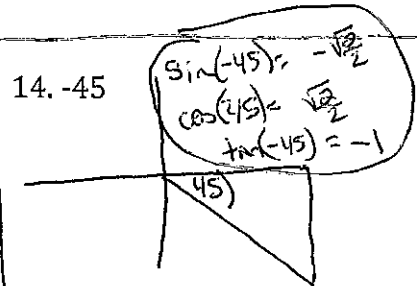
$\sin \theta = 0$ $\csc \theta = \text{undefined}$
 $\cos \theta = -1$ $\sec \theta = -1$
 $\tan \theta = 0$ $\cot \theta = \text{undefined}$

Draw each angle in standard position, find a point on the terminal side, then find the sin, cosine and tangent.

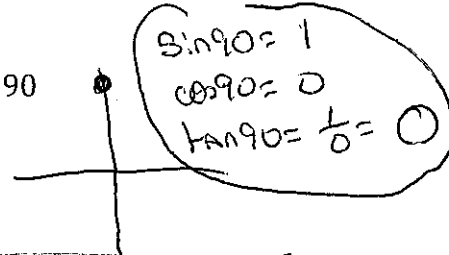
10. 135



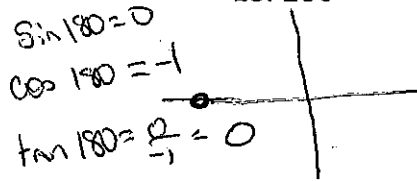
11. 225



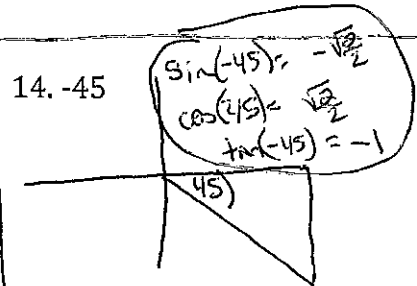
12. 90



13. 180



14. -45



15. -135

Determine the quadrant(s) in which the terminal side of θ must lie in order that the following are true.

- 16. $\cos \theta$ is positive
- 17. $\cos \theta$ is negative
- 18. $\sin \theta$ is negative and $\tan \theta$ is positive
- 19. $\sin \theta$ is positive and $\tan \theta$ is negative
- 20. $\sin \theta$ is negative and $\tan \theta$ is positive