

Name _____
Date _____

Advanced Algebra Unit 10 Advanced Trig
Assignment #6

Decide whether the angles are co-terminal:

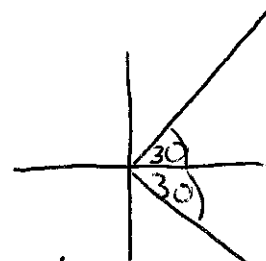
1) 30 and 390

yes



2) 30 and -390

NO

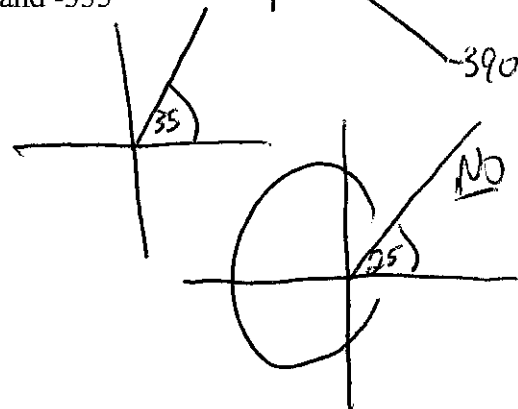


3) 280 and 640

yes



4) 35 and -335



Find the complement of the given angle:

5) 30

60°

6) 45

45°

7) 52

38°

8) 4

86°

Find the supplement of the given angle

9) 100

80°

10) 150

30°

11) 24

156°

12) 36

144°

Find two angles, one with positive measure, and the other with negative measure that are co-terminal with the given angle

13) 50

410° and -310°

14) 210

$210 + 360 = 570^\circ$

$210 - 360 = -150^\circ$

15) 420

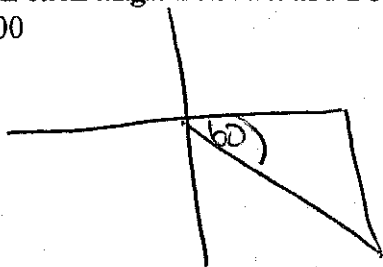
$60^\circ / -300^\circ$

16) 840

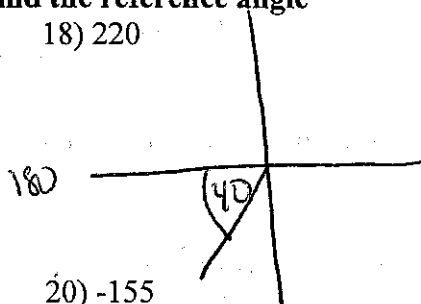
$120^\circ / -240^\circ$

Sketch each angle in Standard Position, then find the reference angle

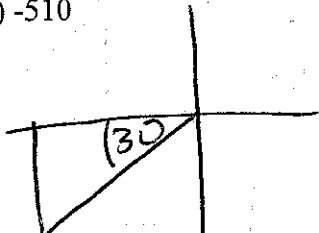
17) 300



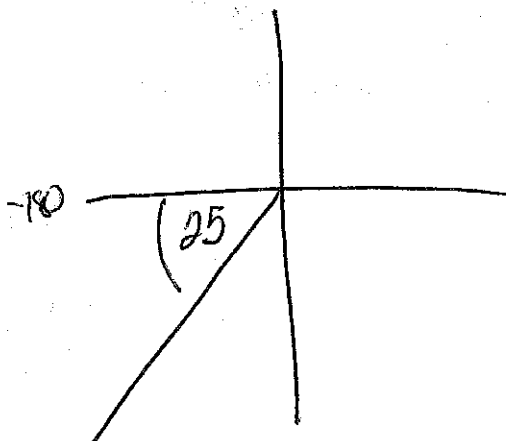
18) 220



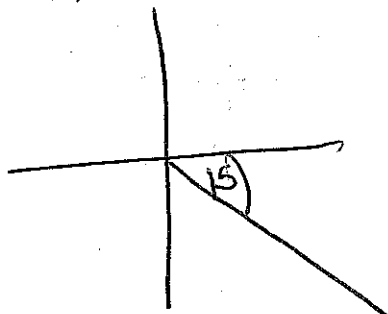
19) -510



20) -155



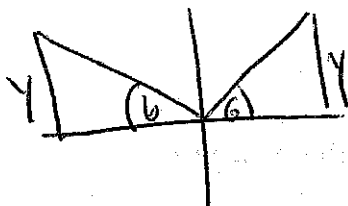
21) 345



Without using a calculator decide whether the equation is true or false.

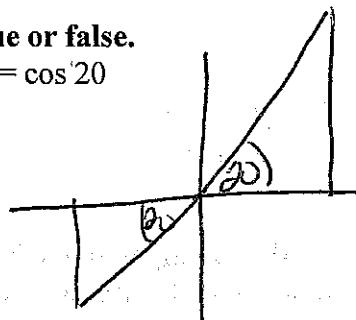
22) $\sin 174 = \sin 6$

yes



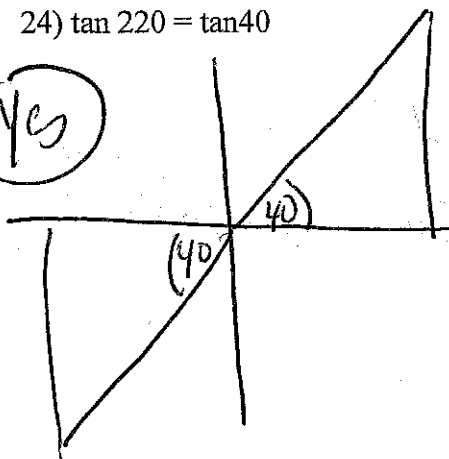
23) $\cos 200 = \cos 20$

no



24) $\tan 220 = \tan 40$

yes



25) $\cos 300 = \cos 60$

yes

