

Name _____

Date _____

Chapter 9

Advanced Algebra- Assignment #4

Chapter 8 Parametric Equations and Trigonometry (Page 424-483)

Draw the angle in the correct quadrant. Find the reference angle. Then find the exact trig value. **NO DECIMALS!!! All your answers should be fractions.**

1) Cos 225



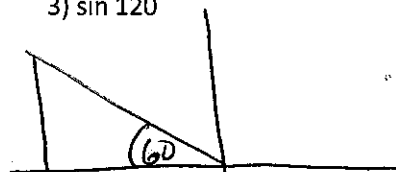
$$\cos 225 = -\frac{\sqrt{2}}{2}$$

2) Cos 135



$$\cos 135 = -\frac{\sqrt{2}}{2}$$

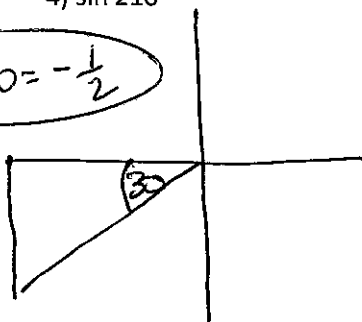
3) sin 120



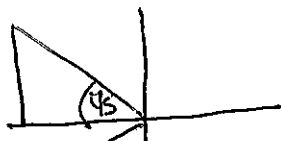
$$\sin 120 = \frac{\sqrt{3}}{2}$$

4) sin 210

$$\sin 210 = -\frac{1}{2}$$

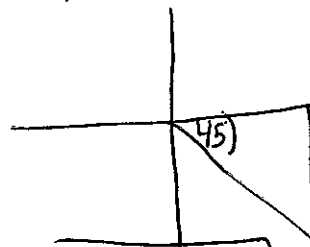


5) tan 135



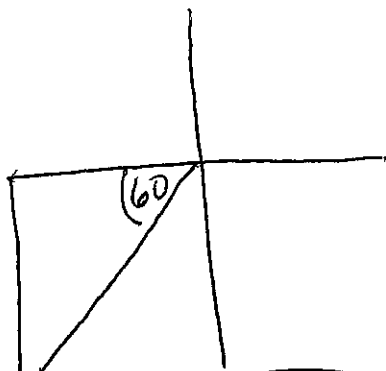
$$\tan 135 = -1$$

6) tan 315



$$\tan 315 = -1$$

7) cos 240



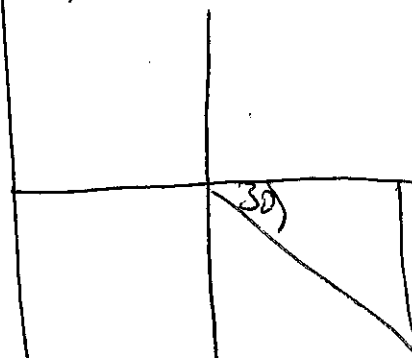
$$\cos 240 = -\frac{1}{2}$$

8) cos 150



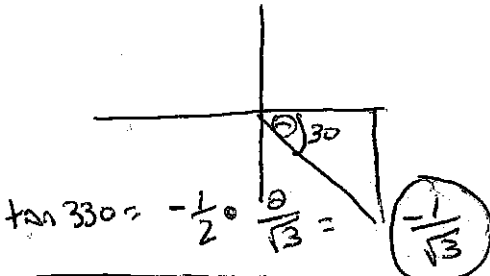
$$\cos 150 = -\frac{\sqrt{3}}{2}$$

9) sin 330

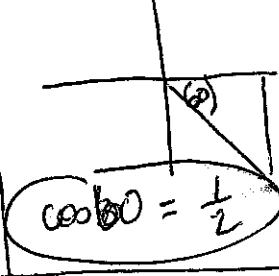


$$\sin 330 = -\frac{1}{2}$$

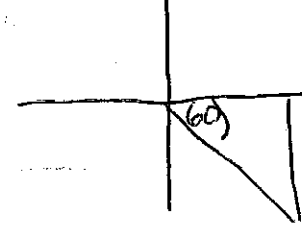
10) $\tan 330$



11) $\cos 300$



12) $\sin 300$



$\sin 60 = -\frac{\sqrt{3}}{2}$

13) $\sin 390$

14) $\cos 480$

15) $\tan 510$

I can use a bearing to solve problems:

16) An object is moving at a speed of 10 feet per second on bearing of 60 degrees.

a) Draw the right triangle to represent this problem

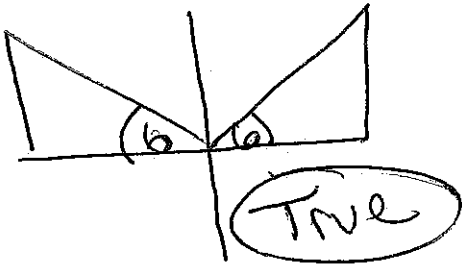
b) What is the parametric equation for the horizontal and vertical

c) Use your tables to find how many seconds it takes to be 90 feet north of where you started.

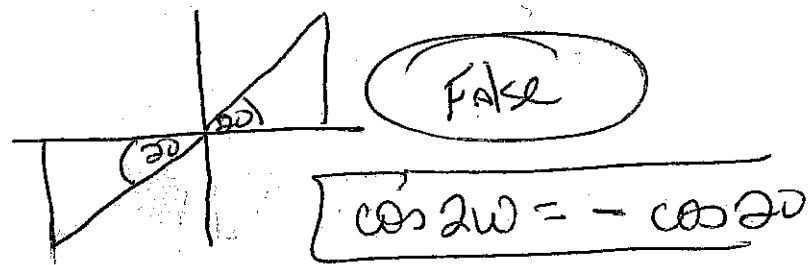
Use reference angles to determine if the following are True or False

* Great problems for Quiz

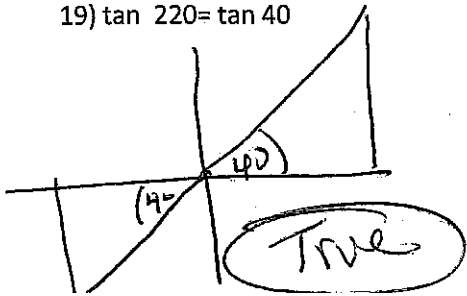
17) $\sin 174 = \sin 6$



18) $\cos 200 = \cos 20$



19) $\tan 220 = \tan 40$



20) $\cos 300 = \cos 60$

